

**THE SOCIO-ECONOMIC IMPACT OF UBOMBO SUGAR IN SWAZILAND**

**2017 HIGHLIGHTS**

**UBOMBO SUGAR LIMITED'S TOTAL ECONOMIC IMPACT IN SWAZILAND**

**R3.1 BILLION**



**SPEND**

**SALARIES WAGES/BENEFITS**  
**R408 MILLION**



**UBOMBO SUGAR INDIRECT TAX CONTRIBUTION**  
**R228 MILLION**



**R34 MILLION CAPITAL INVESTMENTS IN THE BUSINESS**



**R3.08 MILLION COMMUNITY INVESTMENTS**

**STAFF TRAINING**  
**R8.3 MILLION**



**R1.0 BILLION SPENDING ON LOCAL SUPPLIERS**

**EMPLOYMENT OPPORTUNITIES CREATED**

**7 363**

TOTAL JOBS CREATED



**3 249**  
**DIRECT EMPLOYMENT**

**SUPPORTING 13 566 LIVES**



OF 1 199 PERMANENT EMPLOYEES

**15%**

**178 ARE WOMEN**



**190**  
**OUTGROWERS**

OF WHICH

**151**  
**SMALL-SCALE FARMERS**

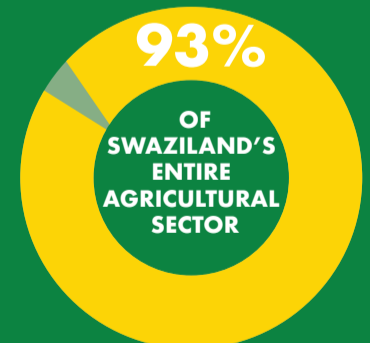


**R47 MILLION** INVESTED IN A SHARED VALUE PROJECT AT ST. PHILIP'S THROUGH WHICH THE COMPANY, COMMUNITY AND GOVERNMENT HAVE COME TOGETHER TO DEVELOP A **450 HECTARE SUGAR CANE FARM**



**R29 MILLION** INVESTED IN A PILOT PROJECT TO CONVERT EXISTING IRRIGATION SYSTEMS TO **DRIP IRRIGATION** AS PART OF A EFFICIENT WATER USAGE STRATEGY

**ILLOVO'S TOTAL ECONOMIC IMPACT IN SWAZILAND IS 6.1% OF SWAZILAND'S GDP**



SIGNIFICANT FOREIGN EXCHANGE EARNINGS BENEFITS ACCRUING TO SWAZILAND FROM EXPORT SALES

**ENVIRONMENT**

**78%** **WATER RECYCLED AND RETURNED TO SOURCE**

**96%** **ENERGY CONSUMPTION FROM RENEWABLE SOURCES**